



# **PADMAVATEE**

**ELECTRICAL SERVICES PVT. LTD.**



# About

## Padmavatee Electrical Services

Established in 2000, Padmavatee Electrical Services is a privately-owned business, We are proud of the reputation we have built for being a reliable and trustworthy electrical contractor, offering quality with affordability. With an extensive range of projects covering the domestic, retail, commercial and industrial sectors, we boast a wealth of experience that we are able to apply to projects regardless of size or end use. Experienced Professionals Who Get the Job Done Right Electrical work can be dangerous and work should only be attempted by registered electricians who have the relevant skills and tools to complete the work safely.

**Amol Nademwar**  
Director



# Our Vision

Our vision is to be a highly successful consulting company in electric energy sector and to provide wide range of services in the field of power transmission and distribution, electricity market and power quality.

# Our Mission

Our mission is to deeply recognize the needs of our clients who are constantly searching for the latest technologies and new ways of thinking to make the best project decisions. We continuously develop our knowledge and expertise and apply them in helping our clients in their business activities. With wide experience, we also develop new, efficient software tools that enable our clients to strengthen their business opportunities. And, above all, we work together with our clients and transfer our knowledge and experience through comprehensive training courses.

# Our Electrical Services

## Commercial

Providing efficient and scalable electrical solutions for businesses and retail spaces.

## Highways

Exclusive Proficiency in Electrical Utility Shifting, Street light and all type of UG Cable laying work In National Highway work

## Industrial

Providing high-capacity electrical services for industrial machinery and operations.

## Substation

Planing, Designing, Errection and Commissioning of All types of substations in Govt and Industrial Sectors



# Services

Padmavatee Electrical Services Pvt. Ltd. offers comprehensive solutions, including project management, installation, testing, maintenance, and commissioning of electrical systems. Our goal is to respond with urgency, expertise, and professionalism to minimize downtime and ensure seamless operations. We are committed to delivering high-quality workmanship with a focus on safety, reliability, and excellence in every service we provide.

## 1 Transport

Our fleet of vehicles enables us to operate swiftly and efficiently at a moment's notice across Nagpur

## 2 Maintenance

We offer 24/7 maintenance for generators, UPS systems, and electrical installations, including programming, diagnostics, and repairs to ensure uninterrupted operations.

## 3 Project Management

We have the expertise and resources to handle complete electrical installation projects, covering everything from electrical design and HT switching to commissioning, generator servicing, and installations.



# Core Markets We Serve

Our expertise extends across various industries, including:

- Commercial Office Buildings
- Hospitals & Healthcare Facilities (MediClinic)
- Industrial & Manufacturing Sectors
- Warehousing & Logistics Hubs
- Educational Institutions (Schools, Colleges, Libraries)
- Retail & Commercial Spaces
- Hotels & Hospitality

We take pride in successfully completing numerous projects across these sectors.



# Completed Projects

## 1. Project Name - CIPL. (Ethanol Plant) LVDS Work

Total Project - 250.00 Cr

Our Work Contribution - 676.00 Lac

Year- 2024-25

## 2. Project Name –Substation Wah at Mohadi - 33/11 RV

Department Name - (MSEDCL)

Total project - 713.00 Lac

Our Work Contribution - 694.00 Lac

Year - 2024- 25

## 3. Project Name - Utility Shifting work of Sindewahri

Total project - 500.00 Lac

Our Work Contribution - 547.00 Lac

Year - 2024- 25

## 4. Project Name – 33/11KV Substation work at bhejgaon

Department Name - (MSEDCL)

Total project - 437.00 Cr

Our Work Contribution - 429.00 CR

Year - 2023-24



# Environmental Drive

Padmavatee Electrical Services Pvt. Ltd. recognizes its vital role in environmental preservation and is fully committed to adhering to all safety and environmental regulations outlined in national legislation. As consumer and stakeholder awareness of these issues continues to grow, we emphasize the need for a structured and responsible approach to managing safety and environmental concerns. Our commitment ensures compliance, sustainability, and a safer future for all.

## Padmavatee Electrical Services Pvt. Ltd. – Our Commitment to Safety & Sustainability

At Padmavatee Electrical Services Pvt. Ltd., we are dedicated to:

- Identify, analyze, and mitigate workplace risks to ensure a safe and secure environment.
- Integrate health, safety, and environmental considerations into planning, decision-making, and operations.
- Encourage research & development in Occupational Safety, Health, and Environmental (OSHE) issues while promoting employee participation.
- Ensure safe handling, storage, disposal, and transportation of equipment, substances, and waste.
- Provide training, instruction, and supervision to help employees identify hazards and contribute to risk management.
- Offer clear safety guidelines and instructions to contractors and visitors for a secure workplace.

*Our commitment to safety, sustainability, and compliance drives us to create a safer work environment for all*



# Core Values

At Padmavatee Electrical Services Pvt. Ltd., we operate on a strong foundation of principles that define our commitment to excellence and integrity. Our core values guide every aspect of our business and service delivery.





# Our Services

We provide comprehensive electrical solutions with a commitment to quality, safety, and efficiency.



## Substation Works

Design, installation, and commissioning of electrical substations for efficient power distribution.



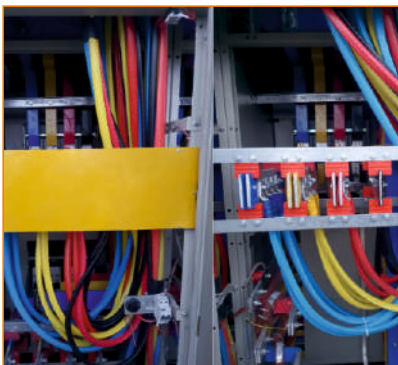
## Transmission Lines

Construction and maintenance of high-voltage transmission lines for reliable power transmission.



## UG Cable Laying

Underground cable laying for secure, efficient, reliable power distribution systems, ensuring safety.



## Industrial LVDS Work

Low Voltage Distribution Systems installation and maintenance for industrial applications.



## PCC, MCC AND APFC

Supply and installation of PCC, MCC, and APFC panels for optimized power management.



## Specialist in Ethanol Plant LVDS work.

Expert LVDS installation and management

*We ensure safe, reliable, and high-performance electrical services tailored to your needs. Partner with us for excellence in electrical solutions!*



# Our Valuable Clients

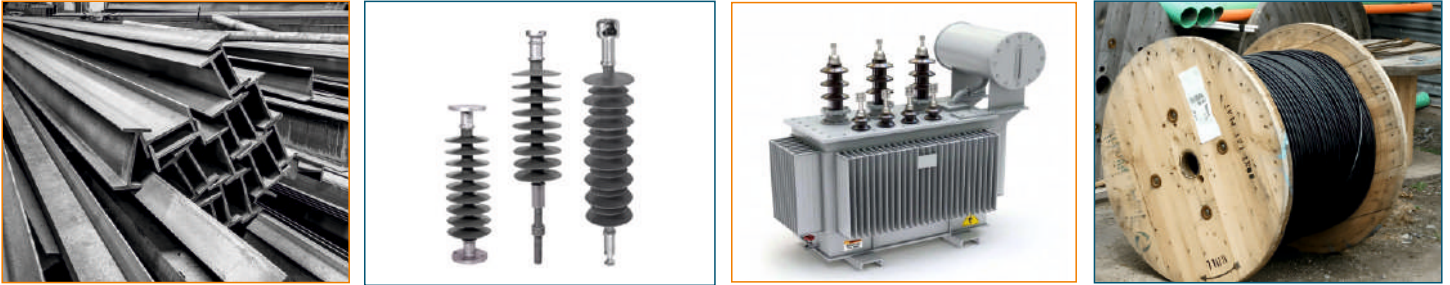


# Department We Serve



# Material Standards

We are prioritizing in using the material of best quality and verified as well. We are in practice since our inception to ensure quality standards material and to be verify before receiving it from warehouse and vendors along with technical parameters.



# Our Projects



# Location


The head office of Padmavatee Electrical Services Pvt. Ltd. is strategically located in Nagpur, allowing us to efficiently serve the local market and respond promptly to our clients' urgent needs.

 Head Office – 702, Himalaya Empire, Himgiri, Babulkheda, Beltarodi Road, New Narendra Nagar Nagpur- 440027

Branch office & Stores – Near RMGM College, National Highway 930, Chandrapur Gadchiroli Road, At post Tah. Saoli, Dist. Chandrapur

---

# Contact Us

 Contact: +91 855 404 9111, +91 942 290 7855

 Email: [pes.gad@gmail.com](mailto:pes.gad@gmail.com)

 Web: [www.padmavateele.com](http://www.padmavateele.com)

